

NOTES:

1. One dimension is required.
2. Work with Specifications 515.

2. SPECIFICATIONS

- A. *Fast Track Steel Column: ASTM A572/F 436 or 7025/F 513 or 7025/F 513 316 or 18-8 ALI.*
- B. *Base Plates and Cap Plates: ASTM A572 500K, ALI 500K-16.*
- C. *Structural Pipe: ASTM A572 500K, ALI 500K-16 or 500K-16.*
- D. *End Rails: End Rails and corner cutouts with a maximum 4' Flat facing: ALI 500K-15 or 500K-15.*

RAILING MEMBER DIMENSIONS TABLE			
MEMBER	DESIGNATION	RAILING	
		OUTSIDE DIMENSION	WALL THICKNESS
Handrail	2" X 55X (40)	2.55"	0.16"
Post	2" X 55X (40)	2.55"	0.16"
Post Joints: Square	2" X 55X (40)	2.55"	0.16"
Handrail: Square/End Plates	2" X 55X (40)	2.55"	0.16"
Handrails	1 1/2" X 54X (40)	1.50"	0.14"
Handrail: Square Rail	1 1/2" X 54X (40)	1.50"	0.14"
Handrail: Square Rail	1 1/2" X 54X (40)	1.50"	0.14"

3. *Universal Steel Column: ASTM A572 500K, ALI 500K-16 or 500K-16.*

4. *Universal Steel Column: ASTM A572 500K, ALI 500K-16 or 500K-16.*

5. *Universal Steel Column: ASTM A572 500K, ALI 500K-16 or 500K-16.*

6. *Universal Steel Column: ASTM A572 500K, ALI 500K-16 or 500K-16.*

7. *Universal Steel Column: ASTM A572 500K, ALI 500K-16 or 500K-16.*

8. *Universal Steel Column: ASTM A572 500K, ALI 500K-16 or 500K-16.*

9. *Universal Steel Column: ASTM A572 500K, ALI 500K-16 or 500K-16.*

10. *Universal Steel Column: ASTM A572 500K, ALI 500K-16 or 500K-16.*

11. *Universal Steel Column: ASTM A572 500K, ALI 500K-16 or 500K-16.*

12. *Universal Steel Column: ASTM A572 500K, ALI 500K-16 or 500K-16.*

13. *Universal Steel Column: ASTM A572 500K, ALI 500K-16 or 500K-16.*

14. *Universal Steel Column: ASTM A572 500K, ALI 500K-16 or 500K-16.*

15. *Universal Steel Column: ASTM A572 500K, ALI 500K-16 or 500K-16.*

16. *Universal Steel Column: ASTM A572 500K, ALI 500K-16 or 500K-16.*

17. *Universal Steel Column: ASTM A572 500K, ALI 500K-16 or 500K-16.*

18. *Universal Steel Column: ASTM A572 500K, ALI 500K-16 or 500K-16.*

19. *Universal Steel Column: ASTM A572 500K, ALI 500K-16 or 500K-16.*

20. *Universal Steel Column: ASTM A572 500K, ALI 500K-16 or 500K-16.*

21. *Universal Steel Column: ASTM A572 500K, ALI 500K-16 or 500K-16.*

22. *Universal Steel Column: ASTM A572 500K, ALI 500K-16 or 500K-16.*

23. *Universal Steel Column: ASTM A572 500K, ALI 500K-16 or 500K-16.*

24. *Universal Steel Column: ASTM A572 500K, ALI 500K-16 or 500K-16.*

25. *Universal Steel Column: ASTM A572 500K, ALI 500K-16 or 500K-16.*

26. *Universal Steel Column: ASTM A572 500K, ALI 500K-16 or 500K-16.*

27. *Universal Steel Column: ASTM A572 500K, ALI 500K-16 or 500K-16.*

28. *Universal Steel Column: ASTM A572 500K, ALI 500K-16 or 500K-16.*

29. *Universal Steel Column: ASTM A572 500K, ALI 500K-16 or 500K-16.*

30. *Universal Steel Column: ASTM A572 500K, ALI 500K-16 or 500K-16.*

31. *Universal Steel Column: ASTM A572 500K, ALI 500K-16 or 500K-16.*

32. *Universal Steel Column: ASTM A572 500K, ALI 500K-16 or 500K-16.*

33. *Universal Steel Column: ASTM A572 500K, ALI 500K-16 or 500K-16.*

34. *Universal Steel Column: ASTM A572 500K, ALI 500K-16 or 500K-16.*

35. *Universal Steel Column: ASTM A572 500K, ALI 500K-16 or 500K-16.*

36. *Universal Steel Column: ASTM A572 500K, ALI 500K-16 or 500K-16.*

37. *Universal Steel Column: ASTM A572 500K, ALI 500K-16 or 500K-16.*

38. *Universal Steel Column: ASTM A572 500K, ALI 500K-16 or 500K-16.*

39. *Universal Steel Column: ASTM A572 500K, ALI 500K-16 or 500K-16.*

40. *Universal Steel Column: ASTM A572 500K, ALI 500K-16 or 500K-16.*

41. *Universal Steel Column: ASTM A572 500K, ALI 500K-16 or 500K-16.*

42. *Universal Steel Column: ASTM A572 500K, ALI 500K-16 or 500K-16.*

43. *Universal Steel Column: ASTM A572 500K, ALI 500K-16 or 500K-16.*

44. *Universal Steel Column: ASTM A572 500K, ALI 500K-16 or 500K-16.*

45. *Universal Steel Column: ASTM A572 500K, ALI 500K-16 or 500K-16.*

46. *Universal Steel Column: ASTM A572 500K, ALI 500K-16 or 500K-16.*

47. *Universal Steel Column: ASTM A572 500K, ALI 500K-16 or 500K-16.*

48. *Universal Steel Column: ASTM A572 500K, ALI 500K-16 or 500K-16.*

49. *Universal Steel Column: ASTM A572 500K, ALI 500K-16 or 500K-16.*

50. *Universal Steel Column: ASTM A572 500K, ALI 500K-16 or 500K-16.*

51. *Universal Steel Column: ASTM A572 500K, ALI 500K-16 or 500K-16.*

52. *Universal Steel Column: ASTM A572 500K, ALI 500K-16 or 500K-16.*

53. *Universal Steel Column: ASTM A572 500K, ALI 500K-16 or 500K-16.*

54. *Universal Steel Column: ASTM A572 500K, ALI 500K-16 or 500K-16.*

55. *Universal Steel Column: ASTM A572 500K, ALI 500K-16 or 500K-16.*

56. *Universal Steel Column: ASTM A572 500K, ALI 500K-16 or 500K-16.*

57. *Universal Steel Column: ASTM A572 500K, ALI 500K-16 or 500K-16.*

58. *Universal Steel Column: ASTM A572 500K, ALI 500K-16 or 500K-16.*

59. *Universal Steel Column: ASTM A572 500K, ALI 500K-16 or 500K-16.*

60. *Universal Steel Column: ASTM A572 500K, ALI 500K-16 or 500K-16.*

61. *Universal Steel Column: ASTM A572 500K, ALI 500K-16 or 500K-16.*

62. *Universal Steel Column: ASTM A572 500K, ALI 500K-16 or 500K-16.*

63. *Universal Steel Column: ASTM A572 500K, ALI 500K-16 or 500K-16.*

64. *Universal Steel Column: ASTM A572 500K, ALI 500K-16 or 500K-16.*

65. *Universal Steel Column: ASTM A572 500K, ALI 500K-16 or 500K-16.*

66. *Universal Steel Column: ASTM A572 500K, ALI 500K-16 or 500K-16.*

67. *Universal Steel Column: ASTM A572 500K, ALI 500K-16 or 500K-16.*


68. *Universal Steel Column: ASTM A572 500K, ALI 500K-16 or 500K-16.*

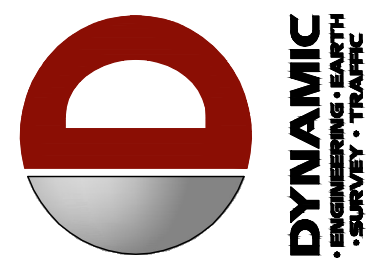
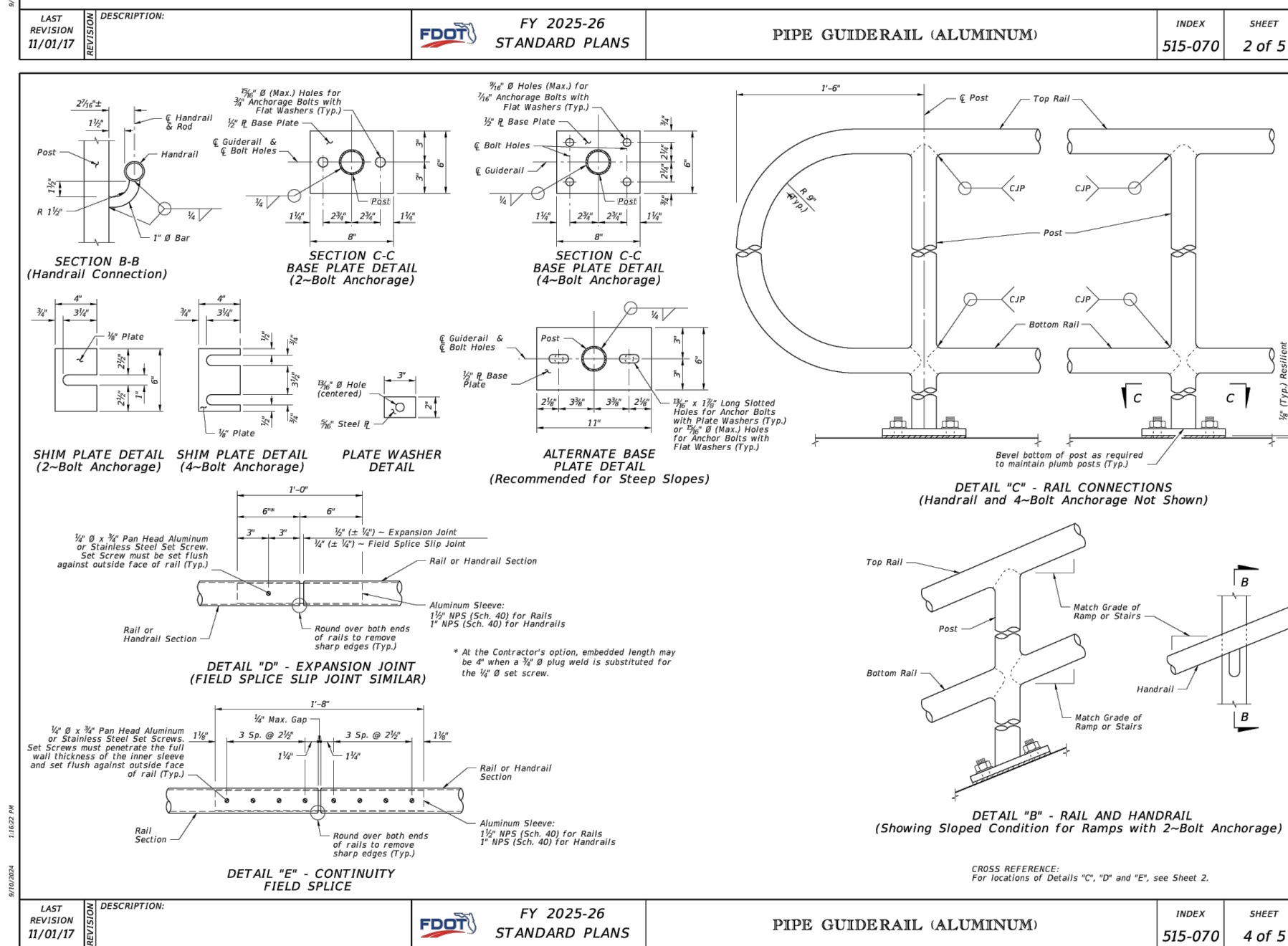
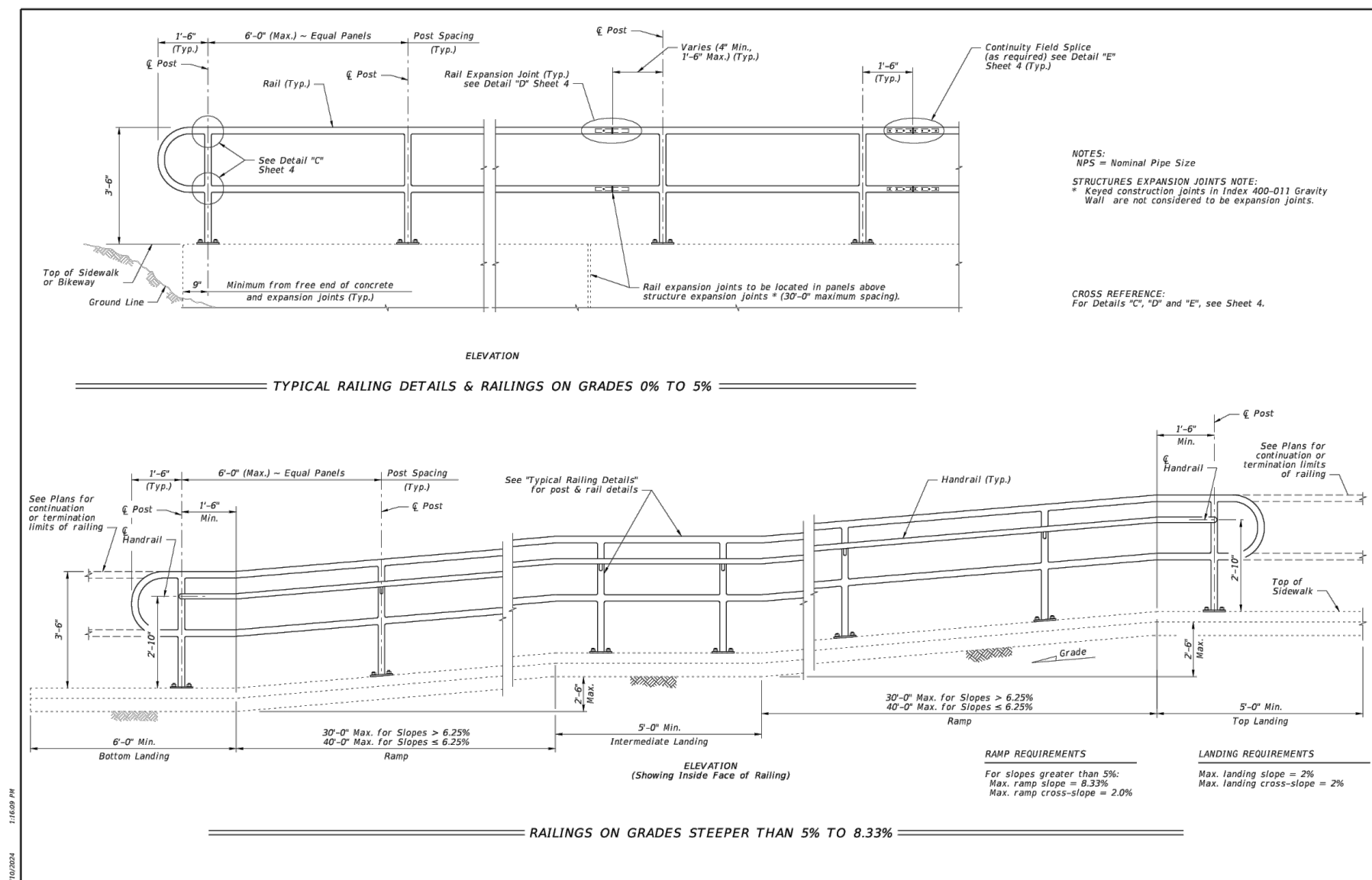
69. *Universal Steel Column: ASTM A572 500K, ALI 500K-16 or 500K-16.*

70. *Universal Steel Column: ASTM A572 500K, ALI 500K-16 or 500K-16.*

71. *Universal Steel Column: ASTM A572 500K, ALI 500K-16 or 500K-16.*

72. *Universal Steel Column: ASTM A572 500K, ALI 500K-16 or*

LAST REVISION 11/01/18	DESCRIPTION:	 FY 2025-26 STANDARD PLANS	PIPE GUIDERAIL (ALUMINUM)	INDEX 515-070	SHEET 1 of 5
------------------------------	--------------	--	---------------------------	------------------	-----------------

[illegible]

DOWN BY:	DESIGNED BY:	CHECKED BY:	CHECKED BY:
AR	JMP	CAR	—



PROTECT YOURSELF
ALL STATES REQUIRE NOTIFICATION OF
EXCAVATORS, DESIGNERS, OR ANY PERSON
PREPARING TO DISTURB THE EARTH'S
SURFACE ANYWHERE IN ANY STATE

CALL 811 FOR DIRECT PHONE NUMBERS VISIT:
WWW.CALL811.COM

FOR STATE SPECIFIC DIRECT PHONE NUMBERS VISIT:
WWW.CALL811.COM

**DYNAMIC
ENGINEERING**

LAND DEVELOPMENT CONSULTING • PERMITTING
GEOTECHNICAL • ENVIRONMENTAL
TRAFFIC • SURVEY • PLANNING & ZONING

100 NE 5th Avenue
Suite B2
Delray Beach, FL 33483
T: 561.921.8570

Offices conveniently located throughout the United States:

New Jersey | Delaware | Hawaii | Maryland | Pennsylvania | Texas

Florida Certificate of Authorization: No. 32535

www.dynamicce.com

MICHAEL D. MILES

PROFESSIONAL ENGINEER
FLORIDA LICENSE No. 81313
DATE:

CHRISTOPHER A. ROGERS

PROFESSIONAL ENGINEER
FLORIDA LICENSE No. 67359

TITLE: CONSTRUCTION DETAILS

SCALE: (H) NOT TO (V) SCALE	DATE: 06/30/2025
PROJECT No: 5754-25-01040	

SHEET No: **C4.01**